

Enter In

at Plymouth Church



**Includes weekly study guide
and daily prayer prompts.**



Enter In

at Plymouth Church

EVERY

ONE

IS

WELCOME

HERE

plymouthlawrence.com

PLYMOUTH
CONGREGATIONAL
CHURCH

This is an extraordinary time to be part of what God is doing in and through Plymouth Church. We're a thriving congregation, united for the worship of God and the service of all, here in the heart of Lawrence. It's our turn to become a blessing to the future generations who will call Plymouth home.

Rev. Dr. Valerie Miller-Coleman

What's Inside

- 4 **It's Our Turn to Become a Blessing**
- 6 **The Challenge**
- 7 **The Legacy**
- 9 **The Plan**
- 10 **The Cost**
- 11 **The Goals**
- 13 **Taking Action**

- 15 **The Giving Pathway**
- 17 **Week 1**
- 19 **Practical Ideas for Living & Giving Generously**
- 21 **Week 2**
- 23 **The Gates on the Giving Pathway**
- 25 **Week 3**
- 27 **The Significance of Making a Commitment**
- 29 **Week 4**
- 31 **Gift Profile Guide**
- 33 **Week 5**
- 35 **FAQs**
- 37 **The Journey is Just Beginning**





It's our turn to become a blessing...

Every Sunday in worship, we commit to 'unite for the worship of God and the service of all.' Plymouth's beautiful and historic sanctuary holds us as we unite for worship. We come here to focus our hearts and minds on God's call in our lives and to find strength to sustain the work for peace and justice.

It's our turn to become a blessing to future generations of Plymouth Church. Please join me and my family as we 'Enter In' to the joy of purposeful generosity, our hope focused on all that God will bring to life through Plymouth Church. May it be said of us, 'Well done, good and faithful servants.'

I invite you to do the following four things as we 'Enter In' to this season of generosity:

1. Commit to spiritual growth and full involvement through your prayers, presence, gifts, service, and witness.
2. Be an ambassador of accurate information.
3. Pray that God will guide you as you discern your role in this season.
4. Enjoy the moment. *This is an exciting time in Plymouth's history!*

In gratitude,

Rev. Dr. Valerie Miller-Coleman
Senior Pastor



Enter In
at Plymouth Church



The Challenge



This historic sanctuary is our inheritance from the abolitionists who founded Plymouth Church almost 170 years ago. As such, its care is both a joy and a responsibility held by each generation of Plymouth Congregational Church. Over the last few years, a careful study of Plymouth's facilities helped clarify a path toward this hopeful future. Our beautiful and historic sanctuary is in urgent need of our attention.

The organ is hanging on by a thread. Without some much needed investment, the extraordinary efforts of Kim and the technicians won't be able to keep it running much longer.

For many people, the sanctuary is an obstacle course of challenges to navigate. When we gather to worship God too many of us find it difficult to hear well, see well, and move easily throughout the space.

As a people committed to **expansive welcome**, we're not living up to our values in this area. We can do something about that through careful, historically sensitive, renovation that makes the sanctuary fully accessible for all people.

The Legacy

1868

Construction Begins

John Haskell designs a unique style for Plymouth Congregational Church.

May 1870

Plymouth Dedicated

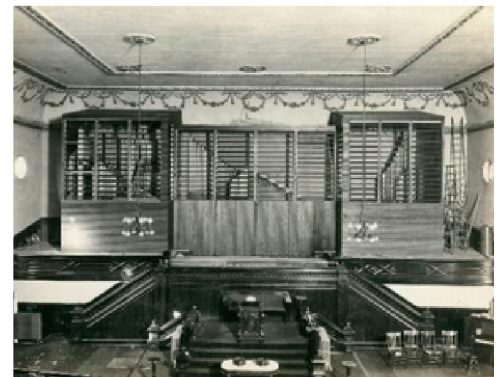
1,500 people attended, final cost \$35,000 for building and \$3,500 for organ. Richard Cordley, who loved music, thought it was “preposterous” to even think of spending that much money on an organ.



1922

New Organ

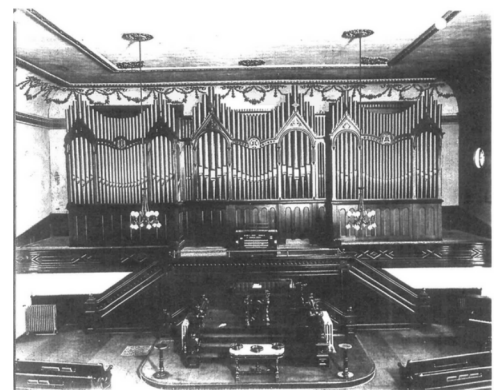
A Reuter organ replaces the original for \$13,000.



1960

Console Updates

The console was replaced after recovering from the 1955 fire.





1968 Sanctuary Renovated

The chancel is widened and air conditioning is added.

1970 New Organ

A new Reuter organ is installed for \$80,716, and the choir loft is enlarged. James Moeser (Minister of Music) wrote, “The decision to build the organ and to enlarge the choir loft was ... bitterly disputed by some who felt that by spending this money on itself the church was denying its mission in and to the world.”



1992 Major Renovation

Sanctuary and narthex updated and stabilized.



May 2024 Campaign Ends

The Enter In campaign successfully raises necessary funds.

Fall 2024 Plans Finalized

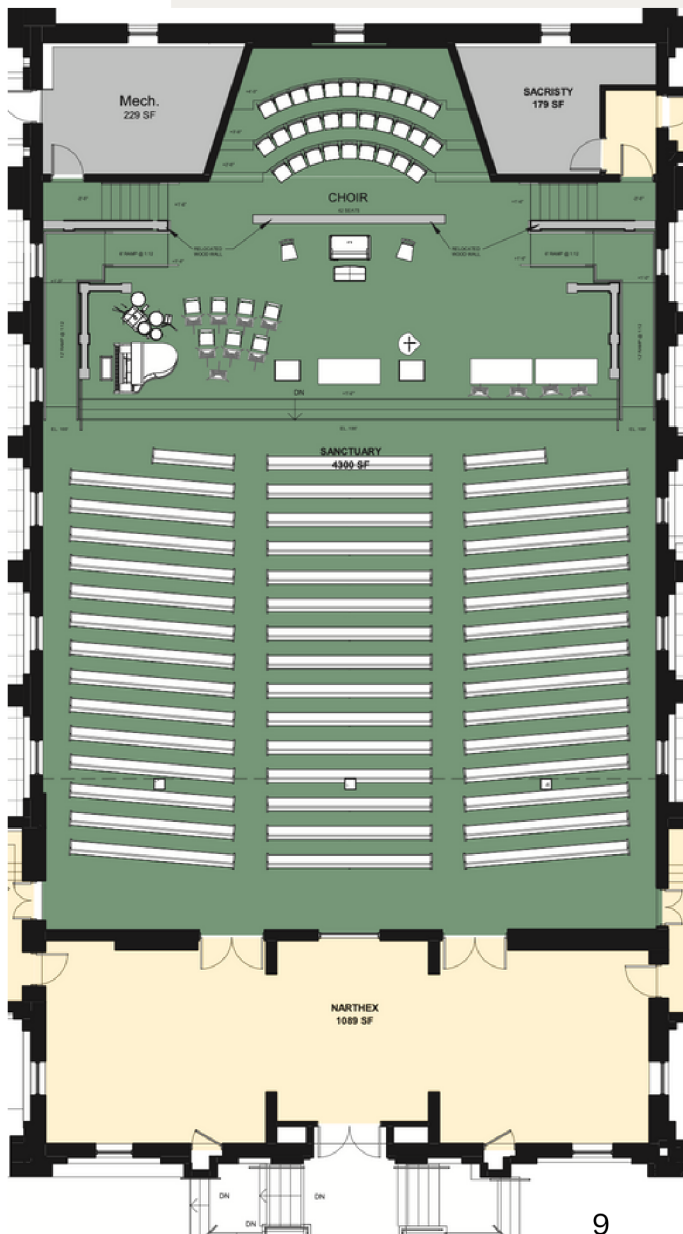
Organ and Sanctuary plans are finalized with congregational input and a contractor is selected.

Spring 2025 Construction Begins

*Construction and organ installation take place with anticipated completion by **Easter 2026.***

The Plan

Our 2022 Facilities Master Plan helped us see the full range of facilities improvements we may choose to address over the next decade. That plan includes a proposed design that makes the chancel area accessible, improves the sanctuary acoustics, and reconfigures and renovates the organ to accommodate both improvements. The centrality of the sanctuary to our mission and the urgency of needed repairs make this our top priority.



The work includes...

- Complete restoration of the Organ
- Expanding the Chancel to the width of sanctuary with 3 or more steps up with ramps on each side and retaining all historic wood for a similar look and feel
- Lowering the Choir Loft to the new Chancel level allowing for expansion and accessibility
- Moving the Organ console to the Chancel
- Addressing HVAC issues
- Addressing hearing and lighting issues
- New flooring
- Refurbishing and cleaning of the stained glass

The Cost



Construction Cost	\$ 1,975,636
Organ	\$ 2,000,000
Project Fees	\$ 513,665
Total	\$ 4,489,301

Based on our previous successful applications and expertise with the State of Kansas tax credits applicable to historical buildings, we plan to apply for, and have high confidence in receiving, tax credits for close to 30% of the total cost of the project.

**As a result, the Enter
In campaign seeks to
raise \$3,200,000 to
fund this work.**

The Goals

Primary Goal

100% participation from the congregation

Secondary Goal

Raise \$3.2 million

This will allow for a total refurbishment of the organ and organ console. Work of this type has not been done on the organ for 54 years. Plymouth's Music is ingrained in what it means to be a part of this congregation. The sounds that are produced by voices young and old are enhanced by an incredible representation of instruments throughout both services. Our members who participate in these performance groups are also part of a fellowship that draws them together as they learn and rehearse new pieces. It's not possible to represent in these words what an impact music has on this congregation. Guiding all of the music is our Minister of Music and Fine Arts, Kim Manz, and the beloved organ. This investment will improve the organ for another fifty years of service sustaining beautiful and dynamic sound, filling the room with music, and providing the "voice of God" in worship. A 2021 National Institute of Health study showed that the vibration of a pipe organ can even calm the parasympathetic nervous system.



While the organ console - the part that Kim plays - is in the choir loft, our choir does not sit or perform as a choir in the loft any longer. The choir has grown in size and outgrown the space. The stairs used to access the loft cannot be climbed by all members of the choir. The space sits unused except when the organ console is played. This requires many trips up and down the stairs for our lead musician in a single worship service.

If the choir loft is merely lowered to the chancel level, the current chancel still isn't big enough for the choir. The choir loft would remain inaccessible to anyone with difficulty climbing stairs. In addition, every Sunday a lay reader shares their voice and the word of the Lord at the lectern. There are often announcements during a Mission Moment representing the service and justice work done outside the church doors. These people must also climb stairs to reach the chancel. The current sanctuary does not lend itself to hosting large music events because of the small size of the chancel and the steps coming from the front. The children's Christmas pageant and musical must work around the chancel. Participants in these events have fallen while navigating the stairs during performances. A new chancel will allow for over seven times the current space and elevate all on the chancel to a height visible throughout the sanctuary. It will also be accessible by a ramp that meets ADA standards..

The Plymouth Covenant states that, "We unite for the worship of God and the service of all," and this project works to make that even more so. It works to support our spiritual lives as we worship God together through music. Finally, it is designed to conserve the historic beauty so finely crafted by our predecessors. This is the work that those that have come before us took on, and it is the work that we must take on today to provide the space for the work of Plymouth Church to be nourished and grow.

Taking Action



What do we need each individual to do during this campaign?

Pray

for our church and this Enter In Campaign

Participate

in Enter In events and church worship services

Read & Engage

in the Enter In materials provided

Discuss

your commitment with family members

Consider

sacrificial giving



The Giving Pathway





The Giving Pathway

In the weeks after Easter, we'll focus on God's invitation to **Enter In** to the joy of the Lord as faithful, strategic stewards of the gifts we receive from God. Drawing on the parable of the talents in Matthew, we'll study what it means to live generous lives, set free from fear and emboldened to share courageous gifts.

The primary text for our series is

Matthew 25:14-30 (NKJV)

14 “For the kingdom of heaven is like a man traveling to a far country, who called his own servants and delivered his goods to them. 15 And to one he gave five talents, to another two, and to another one, to each according to his own ability; and immediately he went on a journey. 16 Then he who had received the five talents went and traded with them, and made another five talents. 17 And likewise he who had received two gained two more also. 18 But he who had received one went and dug in the ground, and hid his lord’s money. 19 After a long time the lord of those servants came and settled accounts with them.

20 “So he who had received five talents came and brought five other talents, saying, ‘Lord, you delivered to me five talents; look, I have gained five more talents besides them.’ 21 His lord said to him, ‘Well done, good and faithful servant; you were faithful over a few things, I will make you ruler over many things. Enter into the joy of your lord.’ 22 He also who had received two talents came and said, ‘Lord, you delivered to me two talents; look, I have gained two more talents besides them.’ 23 His lord said to him, ‘Well done, good and faithful servant; you have been faithful over a few things, I will make you ruler over many things. Enter into the joy of your lord.’

24 “Then he who had received the one talent came and said, ‘Lord, I knew you to be a hard man, reaping where you have not sown, and gathering where you have not scattered seed. 25 And I was afraid, and went and hid your talent in the ground. Look, there you have what is yours.’

26 “But his lord answered and said to him, ‘You wicked and lazy servant, you knew that I reap where I have not sown, and gather where I have not scattered seed. 27 So you ought to have deposited my money with the bankers, and at my coming I would have received back my own with interest. 28 So take the talent from him, and give it to him who has ten talents.

29 ‘For to everyone who has, more will be given, and he will have abundance; but from him who does not have, even what he has will be taken away. 30 And cast the unprofitable servant into the outer darkness. There will be weeping and gnashing of teeth.’”

Week



Sunday, April 14

Enter In... *to Opportunity*

Matthew 25:14-30

It's time to *enter in* to the opportunity God has laid before us as a congregation.

- We have the opportunity to make a difference in our community.
- We have the opportunity to grow in faith as disciples of Jesus Christ.
- We have the opportunity to bear the light of Christ in all our relationships.

My Notes



Through the Week

Questions for Reflection

How do I tend to respond to new opportunities? (eagerly, cautiously, slowly or quickly?)



Where do I see myself in the parable of the talents? How would I have responded?



How might God be nudging me to grow in response to new opportunities?



Daily Prayer

Sunday	Pray for spiritual boldness in offering your time, talents, and financial resources to empower and sustain the future ministry of your church family at Plymouth.
Monday	Pray for opportunities to share your life to cross your path today.
Tuesday	Pray for the Spirit's guidance in identifying abilities that are unique to you that when shared could make a difference.
Wednesday	Pray thankfully for this week's opportunities to be generous.
Thursday	Pray for your pastors and church leaders to enable your church family to reach new opportunities of ministry and mission.
Friday	Pray for the Spirit to deepen your commitment to create joy in the life of God through your bold self-giving.
Saturday	Pray for yourself, your pastors and church leaders, and your church family to have the experience of "entering the joy of God's life."

Practical Ideas for Living & Giving Generously



Nearly every day, we make financial decisions. Some are small – should you get a cup of coffee at McDonald’s or splurge for the handcrafted latte at Wheatfields? Some are big – which house, which car, which college? Some concern the future – how much should you spend on Christmas, which retirement funds should you choose?

Probably the most challenging decision we make with money is the decision to give. Giving creates tension. We wonder, “If I give this away, how will the gap be filled?” That’s why giving is such a big deal. Nothing invites God into our lives like giving. Giving is a tangible way we declare our trust in and commitment to God. Giving often paves the way for God to show up in our lives in a powerful way.

Giving is not just a financial decision – it’s a deeply spiritual decision.

We have put this Generosity Toolbox together to help you consider how God has blessed you and how the Spirit might invite you to trust the Lord during the Enter In campaign. You’ll find ideas that will help you pray and consider how God is leading you to participate.

In Gratitude,

Rev. Dr. Valerie Miller-Coleman



The most effective path to generosity is a spiritual path where you set your heart on things above. Then, your financial priorities will naturally flow out of your spiritual priorities.

People often describe this as “living a generous lifestyle.” It is always a temptation to give to God in a way that makes little impact on how you live. The challenge of living a generous lifestyle is to intentionally and prayerfully find ways to do just that – to let your giving touch your living!

King David declared,
“I will not give to God that which costs me nothing.”
(2 Samuel 24:24)

He understood that the value of the gift presented to God is determined by its value to the giver. A gift that would touch the heart of God must first touch the life of the giver! This is the spirit of lifestyle generosity – “If it is for my God, my gift must have meaning and value to me.”

Lifestyle generosity is a level of giving that affects you – your plans, your activities, your attitude and your approach to life. It means giving up something in one area so that you can give more of yourself in another.

Week



Sunday, April 21

Enter In... *Now*

Matthew 25:14-30

‘Entering in’ to the joy of our Lord isn’t so much a ‘what’ as a ‘when’ proposition. We may choose to be part of what God is doing, to live as citizens of God’s kingdom, right now. Why would we choose to wait?

My Notes



Through the Week

Questions for Reflection

Have you ever found yourself procrastinating a big decision? What finally helped you decide?



What's the best decision you've ever made? How did you arrive at it?



Have you ever looked back and wished you'd made a good decision sooner?



Daily Prayer

Sunday	Pray to center yourself in the now of your life—those areas that demand immediate reflection and action.
Monday	Pray in thanksgiving for the joy you have experienced today.
Tuesday	Pray in gratitude for the ways God has recently renewed or restored God's presence and relationship with you.
Wednesday	Pray for the courage to take a step forward on "The Giving Pathway"—on your journey of generosity.
Thursday	Pray for your pastors and church leaders to experience the joy of God's presence and love today.
Friday	Pray to have the courage to enter today with a sense of immediacy with the hope of knowing the joy of God now.
Saturday	Pray for yourself, your pastors and church leaders, and your church family to have the experience of "entering the joy of God's life."

The Gates on the Giving Pathway



An Initial Giver

is someone who decides to give for the first time, out of a response to God's Word about giving. This is someone who decides to give something and trust God and the leaders of the Church with this gift. (2 Corinthians 8:7-15)

A Consistent Giver

is someone who decides to give something and to give it on a consistent basis to exercise the discipline of giving on a regular basis. Often, someone who decides to make their gift an online recurring gift will be someone who is learning the behavior of consistency. (2 Corinthians 9:6-8)

An Intentional Giver

is someone who is beginning to think about their giving in relation to other things on which they spend their money. This giver starts to make their giving an intentional choice that reflects how they prioritize it in relation to other things they spend their money on. (Luke 14:28-35)

A Sacrificial Giver

is someone who recognizes the cost that Christ paid on the cross for us and surrenders to honoring God with 100% of their resources as a result. A Sacrificial Giver is someone who gives in a way that changes them, in a way that reflects that their giving is governing their spending/saving rather than their spending/saving governing their giving. (Colossians 1:15-18, 22-23)

A Lifetime Giver

is someone who is thinking about the longer term of generosity rather than just the shorter term of month-to-month or even year-to-year generosity. A Lifetime Giver makes decisions in the short term that have longer term effects as it relates to their generosity capacity. A Lifetime Giver might be someone who has a lifetime giving goal, something that will govern their larger-ticket decisions. Much like a Sacrificial Giver makes a commitment that will govern his/her monthly and annual decisions, a Lifetime Giver makes a lifetime or longer-term giving commitment that governs his/her larger-item purchases like homes, cars, investments, and the like. (1 Timothy 6:6-19)

“Currently, the place I’m at in my journey is...

- *Initial*
- *Consistent*
- *Intentional*
- *Sacrificial*
- *Lifetime*



I believe God is calling me to grow my generosity by...



Week



Sunday, April 28

Enter In... *to Courage*

Matthew 25:14-30

It's time to 'enter in' to the courage it takes to fulfill our potential. Growing in faith isn't always for the faint of heart. Sometimes it means taking a brave look at where we are now and where God may be calling us to change.

My Notes



Through the Week

Reflect on Psalm 91 this week...

You who live in the shelter of the Most High,
who abide in the shadow of the Almighty,
will say to the Lord, 'My refuge and my fortress;
my God, in whom I trust.'

For he will deliver you from the snare of the fowler
and from the deadly pestilence;
he will cover you with his pinions,
and under his wings you will find refuge;
his faithfulness is a shield and buckler.
You will not fear the terror of the night,
or the arrow that flies by day,
or the pestilence that stalks in darkness,
or the destruction that wastes at noonday.

A thousand may fall at your side,
ten thousand at your right hand,
but it will not come near you.
You will only look with your eyes
and see the punishment of the wicked.

Because you have made the Lord your refuge,
the Most High your dwelling-place,
no evil shall befall you,
no scourge come near your tent.

For he will command his angels concerning you
to guard you in all your ways.
On their hands they will bear you up,
so that you will not dash your foot against a stone.
You will tread on the lion and the adder,
the young lion and the serpent you will trample under foot.

Those who love me, I will deliver;
I will protect those who know my name.
When they call to me, I will answer them;
I will be with them in trouble,
I will rescue them and honor them.
With long life I will satisfy them,
and show them my salvation.

Daily Prayer

Sunday	Pray for the Spirit to empower you to give of your abilities to your full Potential.
Monday	Pray for the Spirit to reveal ways you can impact your day today by living into an underdeveloped potential in your life.
Tuesday	Pray to find a balance in your life between active engagement and withdrawal or rest that your life may be more impactful.
Wednesday	Pray to reach your potential as a person through generosity.
Thursday	Pray for your pastors and church leaders to exercise as fully as possible their abilities and potential today.
Friday	Pray to enter into the joy of sharing the potential of your life more fully.
Saturday	Pray for yourself, your pastors and church leaders, and your church family to have the experience of "entering the joy of God's life."

The Significance of Making a Commitment

During worship on May 19, 2024, our Plymouth family will have the opportunity to celebrate God's grace and generosity as we complete our **commitment cards**.

You will receive your physical card before Commitment Sunday. Here is an example of the commitment card.

One of the goals for any initiative is 100% participation from every family in our church. We encourage you to prayerfully consider completing a commitment card for this initiative. This portion of the journal is designed to help explain the significance (practically and spiritually) of turning in a card.

Enter In at Plymouth Church

'Well done, good and faithful servant; you were faithful over a few things, I will make you ruler over many things. Enter into the joy of your lord.'

Matthew 25:21

Enter In Campaign Goal: \$3,200,000

Total Three-Year Commitments Needed:

Number of Commitments	Amount of Each Commitment
1	\$750,000
1	\$500,000
1	\$250,000
3	\$100,000
4	\$75,000
5	\$50,000
6	\$36,000
8	\$24,000
10	\$15,000
15	\$10,000
20	\$7,200
20	\$3,600
Other Commitments	Under \$3,600

See gift calculations on the flip side.

Calculate Your Giving

Trusting in God's power for life, this commitment, over and above our regular giving, represents our desire to become part of what God is bringing to life through Plymouth Church. May it bless this congregation for generations to come.

Over the next three years I/we plan to give accordingly...

\$ _____ Weekly for 156 weeks

\$ _____ Monthly for 36 months

\$ _____ Annually for 3 years

I/We wish to give to the Enter In Campaign by a means other than cash...

Examples: Stocks, Bonds, IRA Distributions, Securities, Personal Property, Appreciated Real Estate, Paid-Up Insurance Policies, Charitable Trusts.

Description: _____

Estimated Value of asset given: \$ _____

My/Our Three-Year Commitment Total

\$ _____

I understand this commitment may be revised or canceled at any time at my request.

Name(s) _____

Email _____

Address _____

City _____ State _____ Zip _____

A commitment card...

- Requires a decision over delay; action over avoidance.
- Provides opportunity for personal (self) assessment.
- Motivates a specific increase in one's generosity.
- Communicates the importance of personal growth in giving (Most important decisions in life are confirmed by written documentation).
- Offers an occasion for a church-wide step of faith and commitment (a growth event).
- Provides financial information that enables leaders to make wise decisions.
- Enables church leaders to assess and measure the congregational generosity.
- The card, from day one, represents the culmination of an important spiritual journey.
- Allows a point of conversation and decision for an individual and couple.
- Provides a timeline for decision personally and organizationally rather than an undefined closure.
- There is power in a physical symbol. Of course, there are a lot of biblical examples of that.

I wear a wedding ring as a way of symbolizing my commitment to my marriage. It doesn't make me married. I could be married without it. But the physical symbol is important to me, it's important to my spouse, and it sends a message to those who see it.

- A goal when written is much more likely achieved than one that remains in the head. A written commitment makes it real, and provides a mechanism for accountability.
- In an age when so many helpful but automatic giving options abound, it is tempting to put one's giving on autopilot. This can stall one's continuing growth and discipleship and impact in generosity. Completing a card allows for the automated giver to reassess their giving level.

This campaign is an opportunity for us to understand the "why" of commitment cards in giver-centric language, instead of church-centric language. Emerging generations of Christians have less interest in the needs of the finance committee to form a budget for the church or the need "to keep the lights on and pay the salaries."

- What if we all thought of a commitment card in terms of the spiritual check-up it could provide?
- What if we saw commitment cards as an opportunity not to be missed to reassess one's gratitude to God?
- What if we saw commitment cards as a sign of trust for the future and the joy of joining God in the advance of the Kingdom?
- What if we saw commitment cards as a reminder of the life-giving, family strengthening and joy experiencing from being in a right relationship with God's abundance entrusted to us?

Therefore, we try to call for, and resource, family discussion around the breakfast table, and nighttime prayers—even intergenerational conversations about the purpose and mission for a family to steward both the values and the valuables of the family, even past the current Generation.

Tools provided in this journal are helpful to help you to think about ways to grow in your giving journey; not just the amount of your gift from one year to the next. We are inviting you to do this, not because of what we want from you, but what we want for you.

Week



Sunday, May 5

Enter In... *Wholehearted*

Matthew 6:1-4

It's time to 'enter in' to the gift of generosity with our whole hearts. If something is holding you back or weighing down your heart, it may have a lesson to teach you. Let your heart speak, in prayer or to a close friend. Some healing or new self-understanding may be waiting for you.

My Notes



Through the Week

Practice the daily examen this week.

Reflect on each hour of the day when it comes to an end. Where did you find joy? When did God seem far away? Were there times when you felt close to others or distant?

Notice the patterns each day. Is there a place where healing might be possible?

Ask God to meet you in the shadows and light of your daily life.



Daily Prayer

Sunday	Pray to enter into the joy of God, to enter into the presence of God and to share that presence with others.
Monday	Pray to experience in this moment - in the now - the love and presence of God, and ask to receive new life, love and being for this day.
Tuesday	Pray thankfully for the ways God has recently given you courage in an unforeseen way.
Wednesday	Pray by offering your commitment to step forward on “The Giving Pathway”-your journey to generosity and open yourself to the joy that creates in you.
Thursday	Pray for your pastors and church leaders to be in the joy of God today.
Friday	Pray for the vulnerability, openness, and trust to let God’s presence, God’s joy, become the strength of your life.
Saturday	Pray for yourself, your pastors and church leaders, and your church family to have the experience of “entering the joy of God’s life.”

Gift Profile Guide

What do we believe God is calling each of us to do as we are asked to participate in this campaign?

As you pray about what God is asking you to give during this time, consider how generosity plays a role in living a life of significance. Use this guide as a tool, allowing it to inspire and challenge you to commit more deeply to living significantly.

Enter In Campaign Goal:
\$3,200,000

Total Three-Year Commitments Needed:

Number of Commitments	Amount of Each Commitment
1	\$750,000
1	\$500,000
1	\$250,000
3	\$100,000
4	\$75,000
5	\$50,000
6	\$36,000
8	\$24,000
10	\$15,000
15	\$10,000
20	\$7,200
20	\$3,600
Other Commitments	Under \$3,600

Commitment Calculator

This is a chart showing commitment total amounts, and then breaking it down to show what that commitment would require annually, monthly, and weekly.

If God has led you to make a financial commitment to this project, we know it is helpful to see how your giving could be every week, month, and year. We've provided the following calculator to help you see it, but no one should feel confined to this schedule.

The challenge before us is a large one. The giving profiles we have provided on the previous page demonstrate a number of ways we can work as a church family to stand up and achieve this significant goal. Please pray about your involvement in this campaign. Seek God's wisdom and be clear this is His calling for you. If you believe it is God's idea, we ask you to consider opening your heart in the coming days and give God the room He needs to shape your decision.

Enter In Campaign Goal: \$3,200,000

Commitment Gift Calculations

Total Three-Year Commitment	Annually	Monthly	Weekly
	\$250,000	\$20,8333	\$4,807
	\$166,667	\$13,889	\$3,205
	\$83,333	\$6,944	\$1,603
	\$33,333	\$2,778	\$641
	\$25,000	\$2,083	\$481
	\$16,667	\$1,389	\$321
	\$12,000	\$1,000	\$231
	\$8,000	\$666	\$154
	\$5,000	\$417	\$96
	\$3,333	\$278	\$64
	\$2,400	\$200	\$46
	\$1,200	\$100	\$23

Week



Sunday, May 12

Enter In... *Giving All*

Matthew 19:16-22

It's time to 'enter in' to giving all we are and all we have. Do you ever hold back from fully embracing an experience of joy? Sometimes we hedge our bets as a way to keep from feeling disappointed or exposed to criticism. God asks us to give all that we have and all that we are. That means becoming fully present, open-hearted and open-handed.

My Notes



Through the Week

Prayerfully consider the gifts you've received from God.

Life, love, beauty, companionship, strength...the list is long. Write down your own list and use it as a prayer prompt this week.

How can these gifts inspire your own giving?



Commitment Sunday

Sunday, May 19

Enter In... *to Foy*

Matthew 25:14-30

FAQs



Interpreting that Jesus encourages us to give to others, how does giving to the capital campaign support that mission of service to others?

Prioritizing the well-being of the sanctuary is like the airplane safety instruction about oxygen masks: secure your own mask first before helping others.

In this case, the capital campaign allows the sanctuary to secure its mask. Once secure, the sanctuary then helps all of those in its space to secure their own masks. Our worship space gives its people sustenance or “oxygen” to go back out into the world providing support and service to others.

So, while giving to others is a core principle, supporting the church through the capital campaign allows the church to become even more effective in carrying out that mission. It's an investment that fuels Plymouth's ability to serve the congregation and the wider community.

How will individual congregants' input be gathered and considered as the facilities refurbishment plans are finalized? Is the design pictured a final design?

The design that is pictured is a computer generated drawing based on the Facilities Master Plan Steering Committee's work. It is not based on a set in stone architectural drawing. There are questions from the congregation about sight lines as a result of lowering the current height of the chancel as well as other design questions. Once the capital campaign is complete, the architect will work with the congregation to finalize the design plan.

How is it possible that the organ could need so much work when it always sounds so beautiful?

The organ is 54 years old, which is past the ordinary life of an organ. The console (what you see played on Sundays) was not replaced in 1970 and is over 60 years old. Kim Manz, Minister of Music and Fine Arts, is both a musician and a technician in his ability to work around the issues that continue to arise with the organ.

How will the organ replacement and sanctuary renovation be coordinated? Construction will take how long? How will Sunday worship be done?

The timeline for the sanctuary project is tentative, and until an organ company is selected, it is even more difficult to provide this information. The organ company selection is in process and work is being done to move this forward every day. When the campaign is complete in May, the work with the architecture firm will begin, and an organ company will be selected such that it might be possible to select a construction company in the fall and begin construction by the Spring of 2025. The aspirational goal is for the project to be complete by Easter 2026.

While the sanctuary is under construction, the congregation will worship in the Mayflower Room.

If only one: Capital Campaign or Endowment?

Dick Orchard, former chair of the Endowment Committee and current member of the Annual Appeal and Fundraising Committee, shared at the Stakeholder Breakfast that contributions over the next 3 years should be made to the Capital Campaign and that the endowment will be there when the campaign is over.

What if the campaign does not produce \$3.2 million? What if it produces more?

The amount raised by the campaign will be assessed by both the organ company and the architects to determine the best use of the funds available based on the goals of the project.

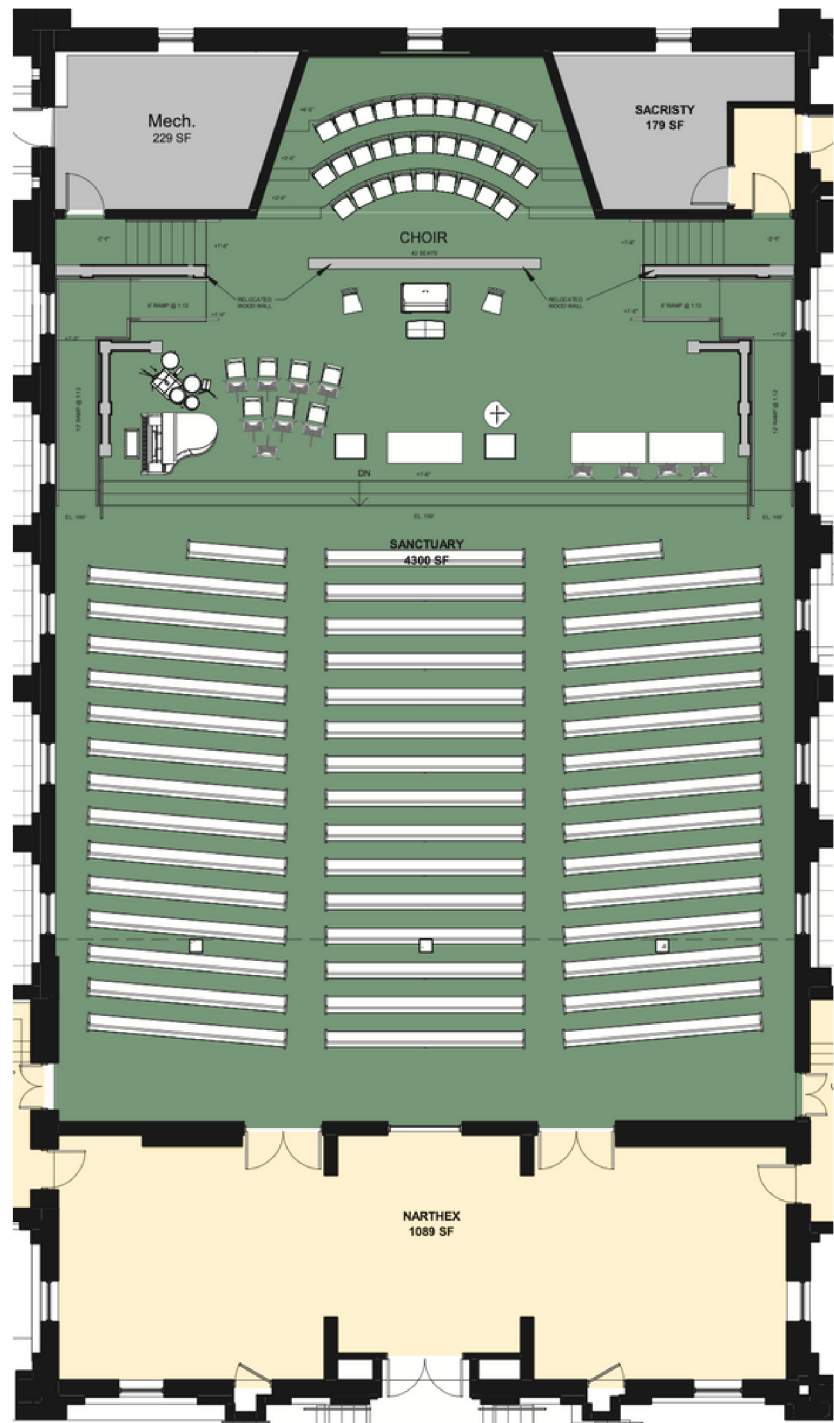
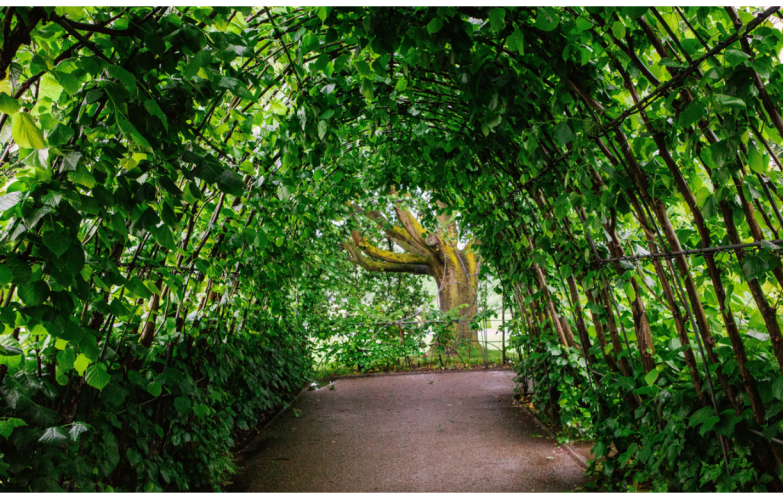
The Journey is Just Beginning

Please be in continual prayer for our pastors and staff, for one another, and for yourself as God calls each of us to become part of this vision for Plymouth Congregational Church.

- 1. Attend Commitment Sunday – May 19, 2024.**
- 2. Pray for God’s favor and blessing to go before us.**
- 3. Become informed by engaging with the campaign materials, by attending events and by asking questions.**
- 4. Commit to discussing and praying about making a 3-year commitment over and above your current giving.**
- 5. Be an ambassador of accurate information.**

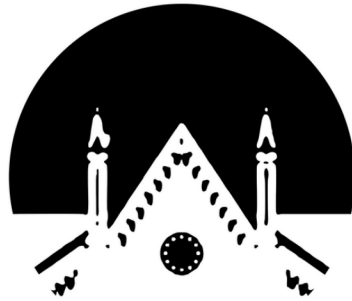
Let’s all join together today in praying for the “Enter In” campaign. Through the Holy Spirit we will be refreshed, renewed, and ready to invest together to more fully fulfill Plymouth’s covenant to “unite for the worship of God and the service of all.”

*In Gratitude,
Rev. Dr. Valerie Miller-Coleman*





Enter In
at Plymouth Church



**Plymouth
Congregational
Church**

UNITED CHURCH OF CHRIST

925 Vermont Street Lawrence, Kansas 66044
www.plymouthlawrence.com • 785-843-3220

